



# Hilltop Tables

CATALOGUE 2022



## Table of Content

About Hilltop Tables

Directors & Artisans

Customised Range

Shosholoza Range

## About Hilltop Tables

A proudly swati company, Fisher and Hilltop (pty) Ltd (Trading as Hilltop & Co) is a furniture manufacturing company founded in 2018 that produces customised wood & steel products handcrafted by community-based artisans in Hilltop, Mbabane. This enables us to draw inspiration from what our beautiful kingdom, its culture and its human capital have to offer.

Hilltop & Co has positioned itself to provide modern, afro-centric designed furniture produced from locally available material. Established as a contemporary wood and steel table manufacturing company, Hilltop tables has been our strongest line of business, along with Hilltop COVID Relief, which entailed the production of sneeze guards in an effort to provide COVID relief to community businesses operating during the pandemic.



## **Founding Director**

### Sabelo Zwane

After graduating with a Bachelor of laws (LLB) with Business Management at the University of East London, United Kingdom in 2010, Sabelo worked in financial services regulation, dispute resolution and in management between London and Mbabane for over 9 years. Having spent a large part of his adolescence in Hilltop Mbabane at the family farm, Sabelo returned to Eswatini from London in 2016 to continue his career in financial services regulation and fintech.

In the same year he turned his hand to more creative ventures and began making furniture for family & friends. Thereafter, due to the growing demand of minimalist furniture products, he began scaling the business up to production of wood & steel furniture products that appealed to corporate & residential clients across the Kingdom. Currently, Sabelo directs the sales, finance, project management and administrative function of the business. As well as procurement of the timber, supervising all woodwork; machinery; and prepping the handcrafted wooden products for steel framing.

## **Director**

### Edmund Fisher

Eddie Fisher started his career in 1963 with a 5 year apprentice at Bamfords Ltd, a manufacturer of farm machinery and diesel engines, in the United Kingdom. By the end of his apprenticeship he had learnt to weld, panel beat, mechanic and plumb. Thereafter, he was granted a full membership to the Institution of Mechanical Engineers in London in 1975. Subsequently, as the project development manager of a team, won the Queens award to industry for JCB Front End Loaders. In 1978 Fisher joined the British Aid as a Senior Mechanical Engineer at PVHO in Malawi and later was transferred to Eswatini to execute the same work for the Eswatini Government. In 1985 he started his own business, Agrimech, a Case International Tractor Dealer and thereafter managed a series of engineering companies between Mozambique, Malawi and Eswatini for the next 20 years. In 2013 he finally settled back in Eswatini and went on to establish Fishertechnic (a 3 tonne mini-excavator business) with his son. In 2019 Eddie partnered with Hilltop Tables and heads the steel fabrication, technical furniture design & functionality, as well as the human resource management of the business

## The Artisans

Sanele Ndzinisa  
**CARPENTER**

Sicelo Zwane  
**WELDER**

Sandile Manana  
**PAINTER**



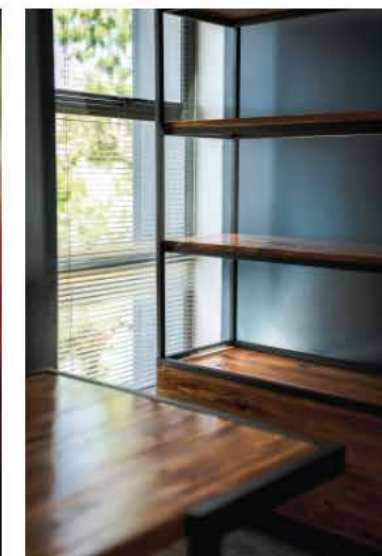
## Our Products

### Customised Furniture Range

We provide customised furniture products for clients looking for a unique and perfect fit for their home or place of business.

We have designed outdoor and indoor tables, an array of shelving solutions, partitions, bar stools and much much more.

Our bespoke furniture solutions show off our craftsmanship and design capabilities that allow us to create the products that our customers imagined.



## Our Products

### Shosholoza Furniture Range

The Shosholoza range, meaning “go forward, make your road, forge ahead”, is our latest range designed by Matthew Elton – a London and Manzini based designer, creating objects, furniture and spaces since 2003.

This range has three unique stylised features - diagonal cross pieces; minimal wood; and interlocking wood and steel parts. Each furniture piece will be available to be purchased online via our website (launching in September) or at the workshop.

Below is a preview of dimensions and pricing for our latest items of the Shosholoza Range.



## STORAGE & SHELVING



### **Umhlambiso**

*Wardrobe Unit*

Pine E6,200.00

Saligna E7,800.00

89.5cm x 49.5cm x 1.8m

### **Mjikeni**

*A-Frame Unit*

Pine E5,000.00

Saligna E6,000.00

1.3m x 31cm x 2.08m



## STORAGE & SHELVING



### **The Elton I**

*1 Stack Shelf Unit*

Pine E2,000.00

Saligna E2,500.00

2m x 31cm x 33.5cm

### **The Elton IV**

*4 Stack Shelf Unit*

Pine E8,000.00

Saligna E10000.00

2m x 31cm x 1.2m

## BEDROOM



### **Bhubhesi**

*King size bed*

Pine E9,800.00

Saligna E11,200.00

### **Ndlovu**

*Queen size bed*

Pine E8,800.00

Saligna E9,600.00

### **Kudu**

*Double size bed*

Pine E7,500.00

Saligna E8,200.00



### **Makhwapeni**

*Side Table*

Pine E2,200.00

Saligna E2,800.00

50cm x 39cm x 45cm

## SEATING



### **Mkhulu Lounger**

Pine E2,800.00

Saligna E3,200.00

71cm x 82cm x 60cm

### **Skoni Chair**

Pine E1,800.00

Saligna E2,200.00

46cm x 78cm x 46cm

## TABLES



### **Lomkiri**

*Office Desk*

Pine E4,500.00

Saligna E5,800.00

1.6m x 60cm x 74cm

## TABLES



### **Gog'tsotsi**

*Dining Table*

Pine E6,600.00

Saligna E7,800.00

2.4m x 90cm x 74cm

## TABLES



### **Ekhaya Table**

Pine E6,000.00

Saligna E7,000.00

2m x 90cm x 75cm

### **Ekhaya Bench**

Pine E3,000.00

Saligna E3,800.00

1.9m x 45cm x 35cm